

M

Mid-range Series

Clavister M-Series

- At a glance

- **Powerful mid-range security products**

High-performing security appliances for medium-sized organizations based on Clavister's award-winning security technology.

- **Full-featured and complete systems**

Functions which include stateful inspection packet filtering, IPsec VPN, Virtual LANs, traffic shaping and high availability.

- **Compact design**

The M-series is designed for space-efficiency, using only one or two rack height units.



The Clavister M-Series is designed primarily for mid-range companies and organizations. Clavister's M-Series consists of three models, the M460, M660 and the M1080, differentiated by performance and the number of interfaces.

Made by perfectionists

All Clavister products are engineered with three important objectives in mind; security, reliability and excellence. This is why we developed our own boot loader instead of trusting an existing operating system. And why the entire firewall core software is a fraction in size compared to other security software. And why the uptimes of our products at customer sites exceed the competition by several years.

You will notice our perfectionism in all aspects of your Clavister product. The Clavister M-Series, true Scandinavian engineering at its best.

Compact - but packed with features

The entire feature set of Clavister's security technology can be found in the Clavister M-Series. You will find full Virtual LAN support, Traffic Shaping possibilities, IPsec compliant

VPN and High Availability back up support, to mention just a few features.

Moreover, all parameters are tuned to extract the maximum performance from the models in this series. This means up to 256.000 concurrent connections, up to 1 Gigabit per second of throughput and up to 1000 VPN tunnels.

The M-Series is powerful, but as compact and secure as any Clavister product.

A safe investment

The products in the M-Series can be upgraded to provide the exact same specifications as the corresponding product in the H-Series, just by replacing the license file!

Yes, you can believe what you just read; with no hardware modification whatsoever, your one-gigabit performing M1080A with 2 Gigabit Ethernet and 6 Fast Ethernet interfaces becomes an H4080A with 4 Gigabit per second of throughput and eight Gigabit Ethernet interfaces.

Investing in the M-Series is safe, as it allows you to grow with your needs.



Hot-swappable, redundant backup power supplies in the Clavister H1080 ensures a reliable system.



M1080A has several interfaces for thorough network segmentation.

Clavister M-Series

- Quick Facts

Clavister M460

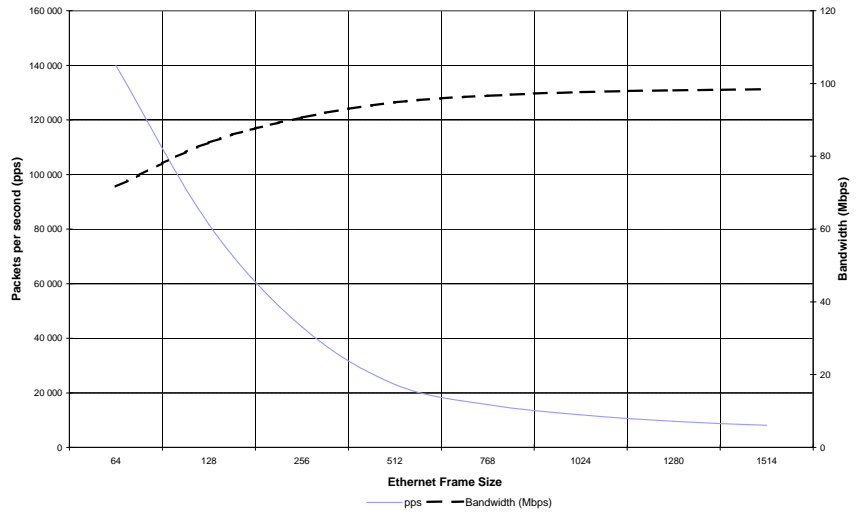
Throughput 400 Mbps
 VPN Throughput (AES) 200 Mbps
 Concurrent connections 128.000
 VPN Tunnels 500
 Network interfaces 6 x 100BASE-TX
 Dimensions Rack mountable 1U, 435 x 500 x 44 mm, 8.9 kg

Clavister M660

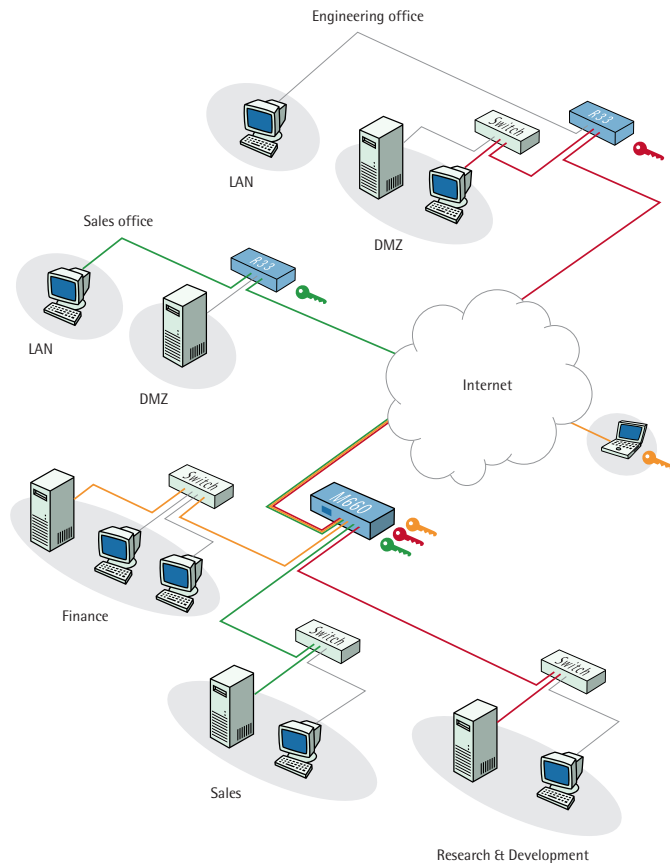
Throughput 600 Mbps
 VPN Throughput (AES) 200 Mbps
 Concurrent connections 128.000
 VPN Tunnels 750
 Network interfaces 5 x 100BASE-TX, 1 x 1000BASE-TX
 Dimensions Rack mountable 1U, 435 x 44 x 500 mm, 8.9 kg

Clavister M1080

Throughput 1000 Mbps
 VPN Throughput (AES) 200 Mbps
 Concurrent connections 256.000
 VPN Tunnels 1000
 Network interfaces 2 x 1000BASE-TX, 6 x 100BASE-TX
 Dimensions Rack mountable 2U, 435 x 80 x 500 mm, 11.9 kg
 Redundant back up hot-swap power supplies.



The Clavister M660 performs at near wire speed, even at small packets sizes.



Clavister products are ideal components in any VPN solution.